

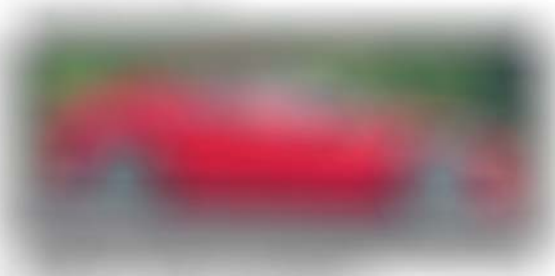
**fast lane**

**christopher tan**

*[Blurred text column on the left side of the page]*



*[Blurred text column on the left side of the page]*



*[Blurred text column on the right side of the page]*

*[Blurred text column on the right side of the page]*



**NISSAN'S SKYLINE CROSSOVER**

Toyota parallel importer Richburg Motors has brought in its first Nissan. The Skyline Crossover (above), also known as the Infiniti EX, is a luxury performance vehicle based on Nissan's successful Z-car powertrain.

Its 3.7-litre V6 produces 330bhp and 361Nm of torque, transmitted by a seven-speed autobox to the rear wheels. Zero to 100kmh is clocked at 6.4 seconds. But the car imported here, being a Japanese domestic model, has a top speed restricted to 180kmh. It is priced at \$176,668.